

Building U ♦ 21739 Melrose ♦ 2,700 Sq. Ft.



This is a representation of the buildings at CBP and may not be the building listed above.

Perfect Location:

- Easy access to major thoroughfares
- Close to airports
- Amenities within close proximity

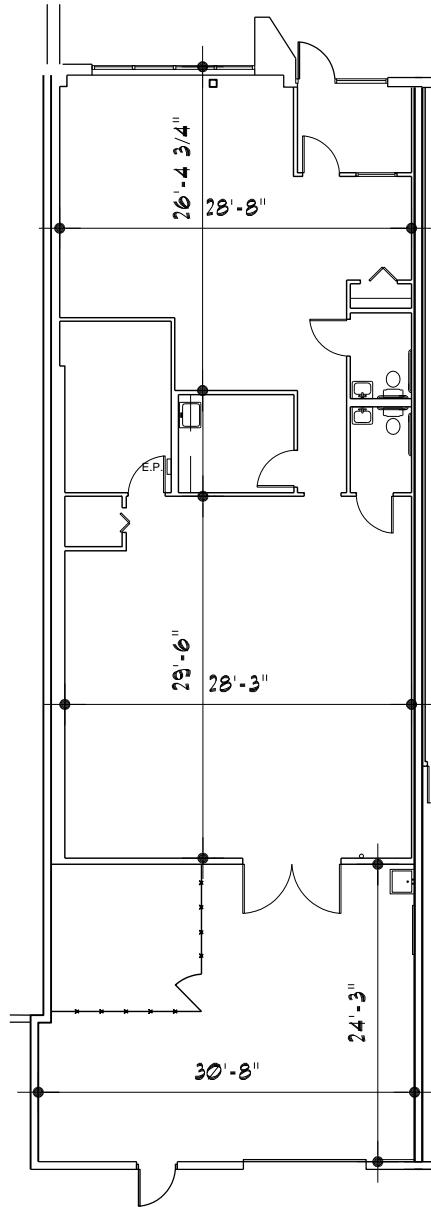
Total Square Feet	2,700 Available
Office Finish	73%
R&D Flex Finish	N/A
Warehouse Finish	27%

Year Constructed	1986	
Zoning	I-L, Light Industrial	
Total Building Parking	262 surface spaces, 4.28/1,000 s.f.	
Building Type	A single-story, multi-tenant, flex facility.	
Building Construction	Masonry	
HVAC # & Type of Units	2 Split Systems-Offices, 1 Unit Heater for Warehouse	
Loading	No Dock	1 Grade Level Door
Clear Height	14'	Overhead door 10' x 10'
Bay Size	N/A	
Life Safety	N/A	
Existing Electric Capacity	240 Volt	200 amp 3 phase
Utilities	Electricity:	DTE Energy
	Gas:	Consumers Power
	Water & Sewer:	City of Southfield
	Telephone:	AT&T



CENTRAL BUSINESS PARK EAST CAMPUS

AVAILABLE FOR LEASE



FLOOR PLAN - 21739 MELROSE AVE.

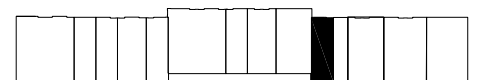
2,700 sq.ft.

SCALE: 1/16" = 1'-0"



CONTACT INFORMATION:

PROPERTY MANAGER:
21555 MELROSE AVENUE, SUITE 24
SOUTHFIELD, MI 48075
PHONE: (248) 350-3338 EXT. 101
FAX: (248) 350-8772



BUILDING U-1