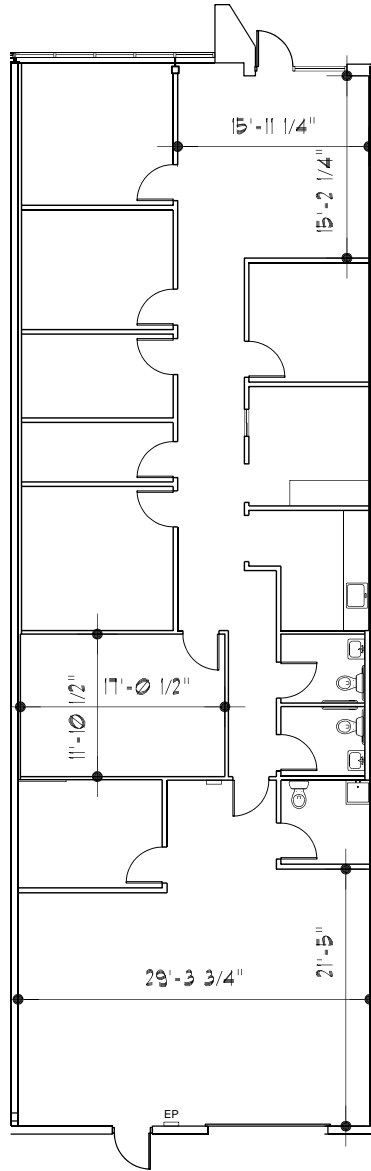


CENTRAL BUSINESS PARK EAST CAMPUS

AVAILABLE FOR LEASE



FLOOR PLAN - 21767 MELROSE AVE.

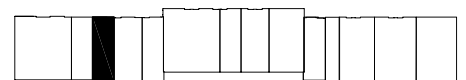
2,700 sq.ft.

SCALE: 1/16" = 1'-0"



CONTACT INFORMATION:

PROPERTY MANAGER:
21555 MELROSE AVENUE, SUITE 24
SOUTHFIELD, MI 48075
PHONE: (248) 350-3338 EXT. 101
FAX: (248) 350-8772



BUILDING U-1